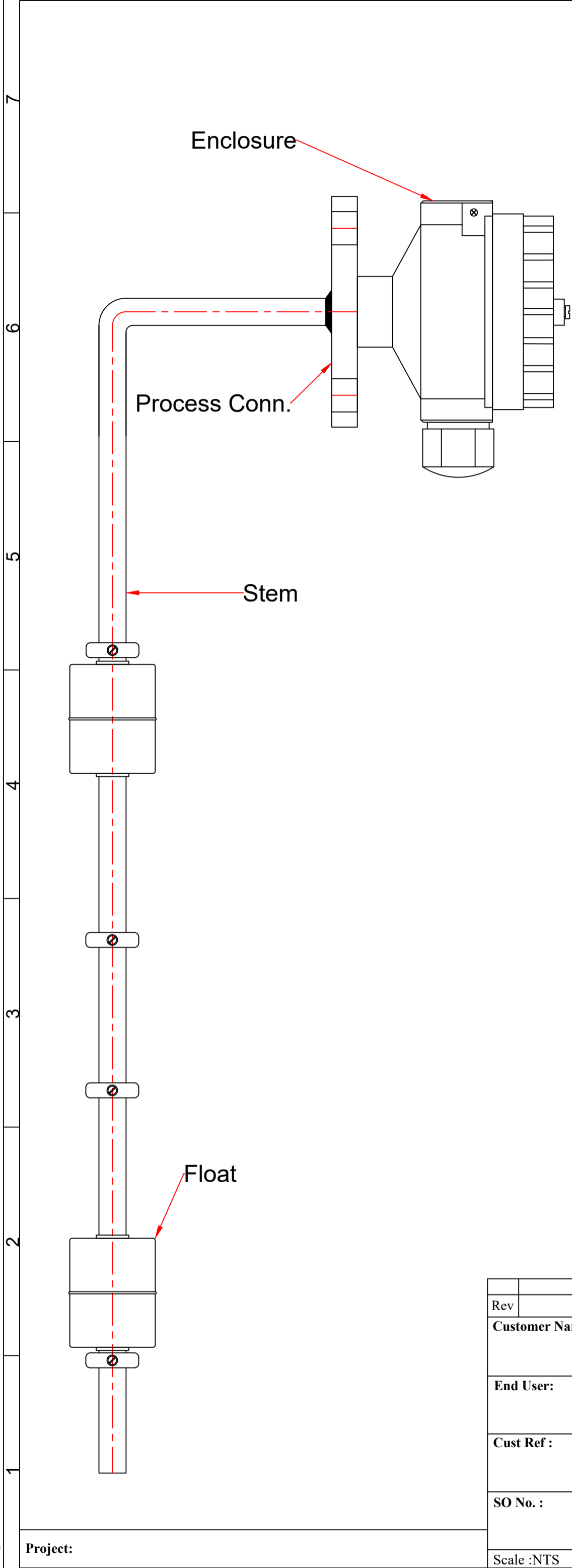


This document is the exclusive property of SHRIDHAN INDIA and contains confidential information. This document or its contents shall not be used, reproduced or disclosed in whole or in part, without prior written permission of SHRIDHAN INDIA. This document and all its copies shall be returned to SHRIDHAN INDIA on demand




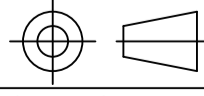
Terminal Type		
SI No.	Type	Material
1	Cable	Std.
2	Din Polyamide	Polyamide
3	Weather Proof	SS 304
4	Weather Proof	Cast Aluminium
5	Explosion Proof	Cast Aluminium
6	Aluminium Junction Box	Aluminium
7	Polycarbonate	PP

Float			
SI No.	Float Dia in mm	Stem Dia in mm	Float Material
1	28	8	SS 316
2	30	8	SS 316
3	41	12.7	SS 316
4	52	12.7	SS 316
5	52	12.7	SS 316L
6	45	12.7	SS 316
7	25	8	PU
8	25	8	PP
9	35	12.7	PU
10	46	16	PP
11	48	16	PVDF

Process Connection	
SI No.	Type
1	Ø75xØ60 PCD
2	Ø75xØ65 PCD
3	Ø100xØ80 PCD
4	2" #150 ANSI
5	2 ½" #150 ANSI
6	2 ½" BS 10-E
7	2" BS 10-E
8	1 ½" #150 ANSI
9	3" BS 10-E
10	3" #150 ANSI
11	Ø45xØ38 PCD
12	Ø58.7xØ51 PCD
13	Sq.92x92 PCD

Product Approvals:
 1. ATEX Approved.
 2. ABS Approved.

NOTE:
 For any other variants contact factory.

Rev	Description	Date	Drawn	Checked	Approved
Customer Name :					
End User:					
Cust Ref :					
SO No. :					
Scale :NTS					
Drawing No. :		Rev No. : 00	Projection : 		
All Dimensions in mm			Sheet 1 of 1		
Title & Model No. Bend Vertical Mounting Float Operated Level Switch					

Project: