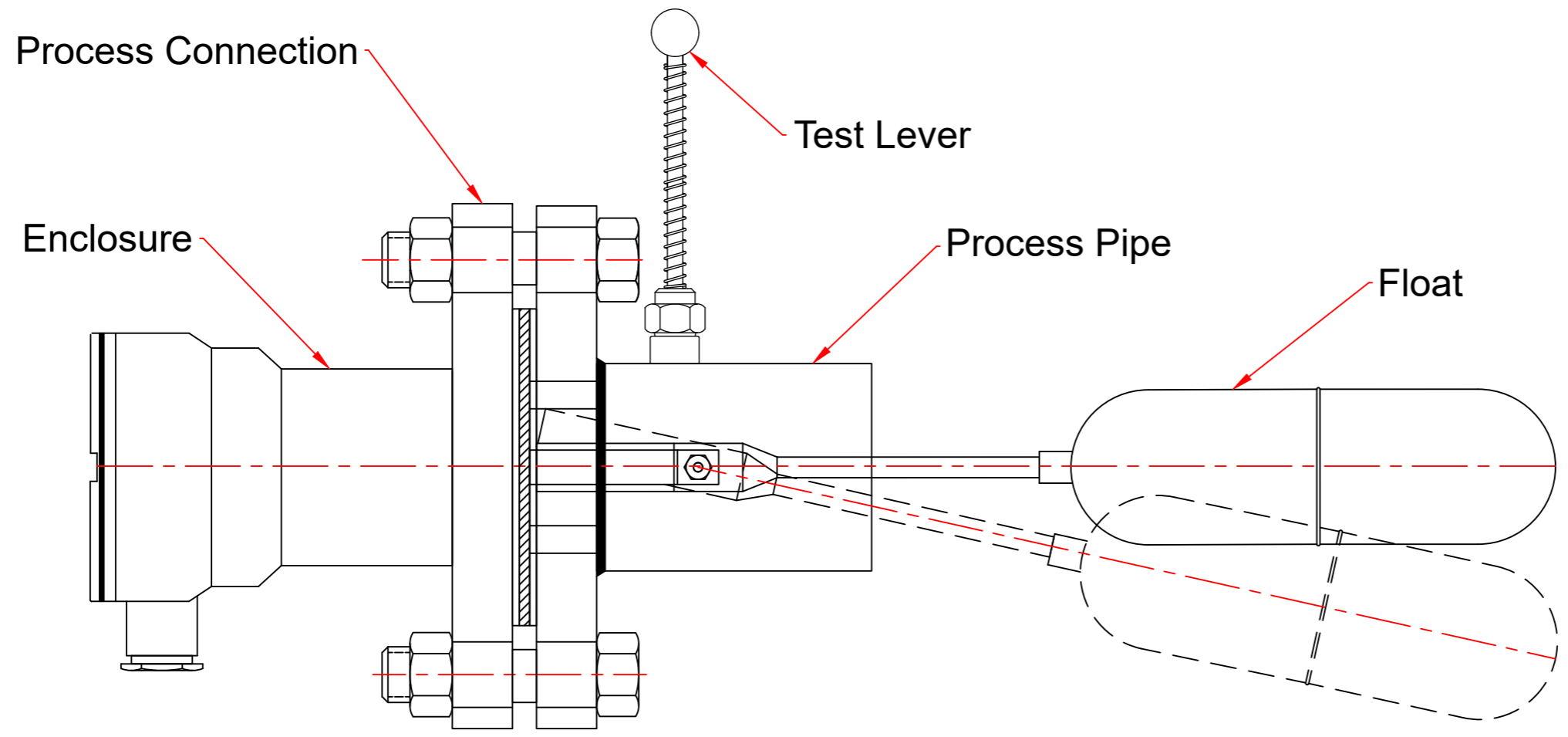



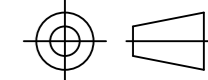
COPY RIGHT & CONFIDENTIAL
This document is the exclusive property of SHRIDHAN INDIA and contains confidential information. This document or its contents shall not be used, reproduced or disclosed in whole or in part, without prior written permission of SHRIDHAN INDIA. This document and all its copies shall be returned to SHRIDHAN INDIA on demand

Enclosure			Float			Process Connection	
SI No.	Type	Material	SI No.	Float Dia in mm	Material	SI No.	Type
1	Weather Proof	Aluminium	1	50	SS 304	1	Sq. 92x92 PCD
			2	57	SS 304	2	Ø120x92PCD
2	Flame Proof	SS 304 for Gr. IIA, IIB	3	57	SS 316	3	1½" #150 ANSI
3	Flame Proof	SS 304 for Gr. IIC	4	60	PP	4	2" #150 ANSI
4	Polypropylene	PP	5	53	PP	5	2" BS 10-E
			6	46	SS 316L	6	3" #150 ANSI
			7	50	SS 316L	7	2½" BS 10-E
			8	50	SS 316	8	2½" #150 ANSI
						9	4" #150 ANSI

Product Approvals:
 1. ATEX Approved.
 2. ABS Approved.



NOTE:
For any other variants contact factory.

Customer Name :				
End User: :				
Cust Ref :		Drawing No. :	Rev No. : 00	Projection : 
SO No. :		All Dimensions in mm		
Project:		Sheet 1 of 1		
R0		Title & Model No. Horizontal Float Switch with Test Lever		
Rev	Description	Date	Drawn	Checked
				Approved
Scale :NTS				

Project:	R0					
Rev	Description	Date	Drawn	Checked	Approved	