

## HYGEIA INLINE SEALS IL



The Hygeia Inline is a cylindrical diaphragm seal with hygienic connections for inline mounting for use in the food and pharmaceutical industries particularly in situations where the process medium is viscous or fast-flowing.

With its stainless steel body and high quality, laser-welded, volume optimised stainless steel diaphragm the Hygeia Inline seal delivers dead-zone free pressure measurement which can be transmitted to pressure gauges, transmitters or switches.

The Hygeia Inline is available with a variety of hygienic connections: screwed DIN 11851 and IDF ISO 2853 or Triclamp connection ISO 2852.

### TECHNICAL

**Instrument connection:** ½" BSP female threaded

**Body:** Cylindrical coat AISI316

**Diaphragm:** Shaped tube AISI316 welded to the cylindrical coat

**Pressure ranges:** For minimum pressure range see table

#### Process connections

- Male thread DIN 11851. DN 20 up to DN 100, PN40
- Male thread APV-ISS standard. DN 1" up to DN 2", PN40
- Male thread SMS standard. DN 1" up to DN 2", PN40
- Clamp for DIN tubes. DN 20 up to DN 65, PN 40
- Clamp for inch-sized tubes. DN 1" up to DN 4", PN40
- Flange with sealing face DIN EN 1092-1. DN20 up to DN 100
- Flange with sealing face ASME B 16. RF. DN 1" up to DN 4"

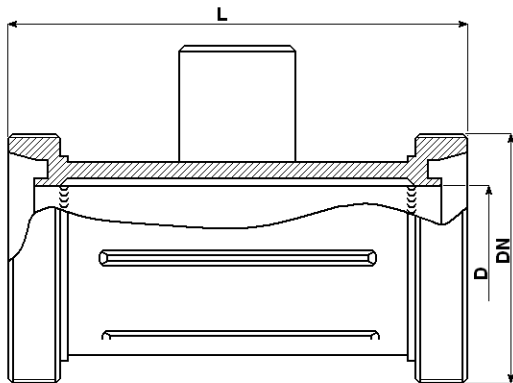
### OPTIONS

- **Instrument connection:** ¼"NPT, ½" NPT or ¼" BSP female
- **Diaphragm:** tantalum, hastelloy C276 or others
- **Complete body:** tantalum, hastelloy C276 or others
- Membrane plane, not embossed
- Cooling element

### HOW TO ORDER

Please specify : model, process connection, options if any

**Example** : IL, TRICLAMP DN40



Process Connection		Minimum Span (mbar)			Pressure Gauge Minimum Span (bar)		
		Transmitter Type			Gauge Diameter (mm)		
Imp.	DIN	GP	AP	DP	63	100	160
1-1.1/2"	DN25-40	10	10		10	10	
2-2.1/2"	DN50	1.6	1.6	0.8	1.6	1.6	
3-4"	DN80-100	0.5	0.5	0.25	0.5	0.5	0.5

**Hygienic Connection Dimensions**

**DIN 11851**

DN	D	Thread	L
25	26	52x1/6	120
32	32	58x1/6	120
40	38	65 x 1/6	120
50	50	78 x 1/6	122
65	66	95 x 1/6	124
80	81	110 x 1/4	132
100	100	130 x 1/4	60

**TRI-CLAMP ISO 2852**

DN	D	L
1"	25.4	126
1.1/2"	38	126
2"	51	126
2.1/2"	63.5	131
3"	76.1	131
4"	101.6	160

**IDF / ISO 2853**

DN	D	Thread	L
1"	25.4	37x 3.175	110
1.1/2"	38	50.5x3.175	110
2"	51	64 x 3.175	110
2.1/2"	63.5	77.5 x 3.175	110
3"	76.1	91 x 3.175	60
4"	101.6	118 x 3.175	60